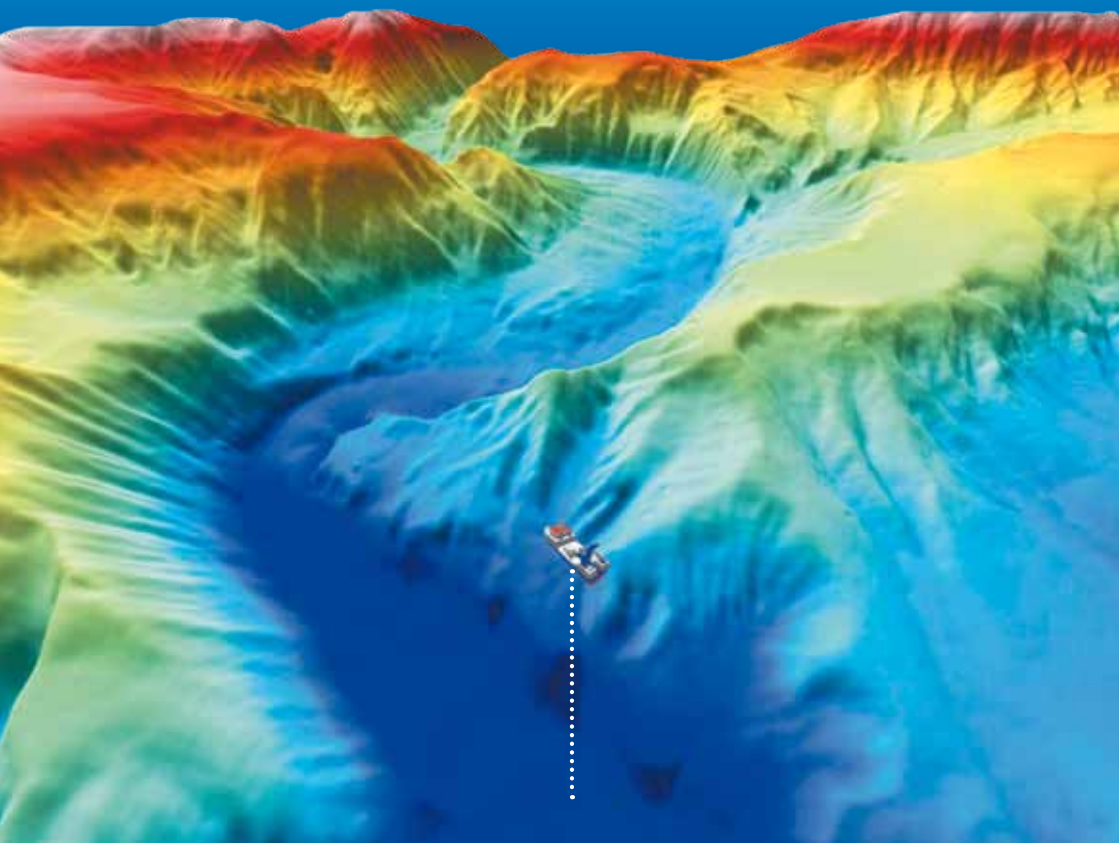
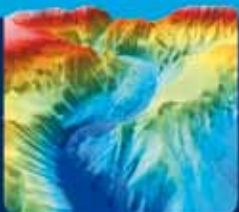


Version 5.0 Installation Guide



PISCATUS3D

SUPERIOR SEABED VISION



Piscatus^{3D} delivers a real time 3D view of the ocean floor anywhere in the world, helping you to make the best decisions to catch more fish faster.

Version 5.0

Installation Guide

Congratulations on your purchase of Piscatus^{3D}

Piscatus^{3D} is a comprehensive 3-Dimensional fishing tool that displays in superior detail, exactly what is happening underwater in real-time as you fish. With an interface designed by fishermen for ease of use, view your underwater fishing grounds as never before. Piscatus^{3D} shows your boat, the seabed, the target fish and your fishing gear. Built on a stable and reliable technology platform, Piscatus^{3D} automatically saves your data as you fish. Piscatus^{3D} is available in three customised applications designed specifically for your fishing operations: Inshore Pro, Deep Sea Pro and Piscatus^{3D} Classic.



LICENCE TERMS

1. The Piscatus^{3D} software (the Software), has not been designed as, nor purports to be, a navigational aid and must not be used or relied upon as such by the user. The Software is supplied solely as an aid to fishing not an aid to navigation.

The software is supplied on the express condition that Piscatus^{3D} Limited accepts no liability for any loss of catch, failure to catch, loss of life, personal injury, or loss or damage to any vessel or fishing gear resulting from the use of the software.

2. The licence entitles the user a single licence to use one copy of the Software installed on a single terminal.
3. The sole entitlement of the user is as a licensee of the Software for the purposes of the user only.
4. Piscatus^{3D} retains sole and exclusive copyright of the Software and written material supplied and neither the Software itself nor any written materials supplied with the Software may be copied by the user, or made available to, or used by, any other person in any manner.
5. All other rights are solely reserved to Piscatus^{3D} Limited.
6. Piscatus^{3D} Limited's liability in respect of the Software is entirely limited to any performance failure relating to the Software itself when operated strictly in accordance with operator instructions. Piscatus^{3D} Limited's liability is solely limited to a refund of the purchase price of the Software. In particular no liability is accepted for any failure caused by the operating environment in which the Software is installed or used; any consequential loss or damage incurred by the user or any third party; the consequences of any installation or reconfiguration of the user's operating environment by the distributor of the Software. All warranties implied by the law of any jurisdiction are excluded to the maximum extent possible.
7. Piscatus^{3D} Limited accepts no liability whatsoever for any failure, breakdown or incompatibility of any related hardware supplied by its distributors or dealers or otherwise used to operate the software.
8. This licence continues until terminated. The user may terminate the licence by destroying the CD containing the Software and all written material supplied or returning it to the retailer/distributor from whom it was purchased. The licence terminates automatically if the user is in breach of any provisions of this licence.

-
9. If any provision in this licence is held to be unenforceable by any Court having jurisdiction the rest of this licence will remain in full force and effect.
 10. This licence is governed exclusively by the laws of New Zealand, and constitutes the entire agreement between the user and Piscatus^{3D} Limited replacing the terms of any purchase order, marketing material, communication, or any representation by Piscatus^{3D} Limited or any distributor/retailer appointed by Piscatus^{3D} Limited.

ACCEPTANCE

The intending user of the Software has read the terms of this licence and by ticking the box to install the Software accepts the above Licence Terms as exclusively constituting the terms of use of the Software.

1.0 INTRODUCTION	7
1.1 WHAT IS PISCATUS ^{3D}	7
1.2 PISCATUS ^{3D} MODES.....	7
1.3 HOW PISCATUS ^{3D} WORKS	8
1.4 BUILT IN DATA.....	10
1.5 COMPUTER SPECIFICATIONS	10
2.0 INSTALLATION INFORMATION	12
2.1 INSTALLATION TYPES	12
2.2 INSTALLATION MEDIA.....	14
2.3 INSTALLATION MODEL	15
3.0 SOFTWARE INSTALLATION	16
3.1 INSTALLING PISCATUS ^{3D}	16
3.2 RUNNING PISCATUS ^{3D} FOR THE FIRST TIME – OBTAINING THE PERMIT CODE	19
4.0 CONFIGURATION OF SMISEALOG	21
4.1 INTRODUCTION.....	21
4.1.1 <i>Using SMISealog</i>	21
4.1.2 <i>SMISealog quick setup</i>	22
4.1.3 <i>Viewing SMISealog Status</i>	24
4.2 COMM PORTS AND NMEA	24
4.2.1 <i>Viewing incoming data</i>	24
4.2.2 <i>Setting up comm ports</i>	25
4.2.3 <i>Listening to incoming data</i>	25
4.2.4 <i>Sending data</i>	25
4.2.5 <i>Using the automatic NMEA setup feature</i>	26
4.2.6 <i>Selecting NMEA settings</i>	26
4.2.7 <i>NMEA examples</i>	27
4.2.8 <i>Primary and Secondary depth data and auto-switch</i>	28
4.2.9 <i>Filtering data</i>	29
4.2.10 <i>Enabling ‘Setup Mode’ to ignore GPS position problems</i>	30
4.2.11 <i>Receiving ARPA target data</i>	30
4.3 USING TIDE ADJUSTMENT	30
4.3.1 <i>How tide adjustments are calculated</i>	30
4.3.2 <i>Viewing current tide adjustment</i>	30
4.3.3 <i>Selecting a tide engine (check)</i>	31
4.3.4 <i>Setting a default tide station to always be used</i>	31
4.3.5 <i>Viewing a list of available tide stations in your area</i>	31
4.3.6 <i>Viewing the tide station graph</i>	32

4.4 SIMULATIONS.....	32
4.4.1 Recording simulation files.....	32
4.4.2 Playing recorded simulation files.....	33
4.4.3 Simulation options.....	34
4.4.4 Playing preset simulations.....	35
4.5 FAULT FINDING	35
4.5.1 Restoring factory defaults	35
4.5.2 Finding problems.....	35
5.0 USING MULTIPLEXERS	37
5.1 MX4.....	37
5.2 DM24	37
5.3 HOW TO CONVERT FURUNO CIF TO NMEA0183 WITH A DM24	39

1.0 INTRODUCTION

1.1 What is Piscatus^{3D}

Piscatus^{3D} is a computer program that makes maps of the seafloor or lake bed for commercial and recreational fishermen. It has been designed to help fishermen catch more fish in less time. By connecting into a boat's GPS, sounder and seafloor discrimination device, a database can be built of the seabed's depth, hardness and roughness from the area the boat fishes. Depths are then used to build a model of the seafloor and hardness and roughness characteristics are overlaid. By getting accurate maps of the seafloor instantly, a fisherman can increase the boat's efficiency markedly.

Seabed Mapping (Piscatus^{3D} Ltd) is run by ex-commercial fishermen and it is a policy that all our staff spend time at sea on commercial fishing boats. Our experience and close association with the commercial fishing industry helps us to make our products as useful as possible and easy to use for fishermen. We understand that fishermen want to catch fish and not learn about computers.

Piscatus^{3D} can interact with the boat's plotter via a component called Shared Memory. At the moment C-Plot Pro and SeaPlot Pro are supported. If a different plotter is used please contact Seabed Mapping and we can see if we can integrate with it as well.

This manual details the background components of Piscatus^{3D}, what they do and how they all work together, the software installation procedure and the configurations necessary for the Piscatus^{3D} system to work with the boat's electronic equipment. This manual assumes a reasonable level of understanding of a PC, windows and marine electronics. Please consult the Piscatus^{3D} user manual for learning how to operate the software.

1.2 Piscatus^{3D} modes

Piscatus^{3D} is available in two different modes - Inshore-Pro and Deepsea-Pro. It is important to understand the differences between these modes and how the modes overlap. Please refer the table below to compare the available modes. Inshore-Pro produces the highest detail of the seafloor because of its finer data resolution and depth accuracy. Deepsea-Pro is a more efficient system by storing less data it is able to maintaining bigger map sizes in

deeper waters. For most vessels Inshore-Pro is the current choice, as it can give higher detail in shallow water but still stores data down to 3200 metres. Deepsea-Pro is recommend for vessels working almost constantly over 1000 metres or require 3D maps larger than 20 Nm.

Feature	Inshore-Pro	Deepsea-Pro
Data resolution	2.4 metres	20 metres
Depth accuracy	0.1 metres	1 metre
Minimum depth	0 metres	0 metres
Maximum depth	3200 metres	32000 metres
Minimum map size	1 Nm	5 Nm
Maximum map size	20 Nm	60 Nm
Best performance	< 1000 metres	> 1000 metres
< 1000 metres	High detail	Good detail
> 1000 metres	Small maps, detail same as Deepsea-Pro	High detail, larger maps

1.3 How Piscatus^{3D} works

There are five main software elements that make Piscatus^{3D} work. These are:

- SMISealog
- Shared Memory
- SeaDBLog
- Firebird Database Server
- Piscatus^{3D}

Figure 1 over the page shows one possible setup of a Piscatus^{3D} system and the flow of data between the various Piscatus^{3D} elements. In this example, data is given out from the various bits of electronic equipment on the boat in NMEA format. Each of these data outputs are fed into a Data Multiplexer, which combines all the NMEA sentences into one data stream. This data stream is then fed into the Piscatus^{3D} computer via a single comm port. This is a common setup for vessels with more than two devices outputting data to Piscatus^{3D}.

Other possible Piscatus^{3D} setup options are to receive the data via UDP using the computer's ethernet port, or to send NMEA into multiple comm ports on the PC, thus removing the need for a data multiplexer. UDP data is only available from some NMEA Data Multiplexers or can be configured on another computer within the Piscatus^{3D} computer's network. This setup allows multiple data sources to be shared over an Ethernet network to multiple computers and multiple programs per computer. Setting Piscatus^{3D} SMISeaLog to listen to NMEA from many comm ports is a good option for users only requiring GPS and echo sounder data, but correct precautions should be taken concerning electrical isolation and device earthing. Please contact your Piscatus^{3D} dealer concerning electrical isolation and device earthing with your installation.

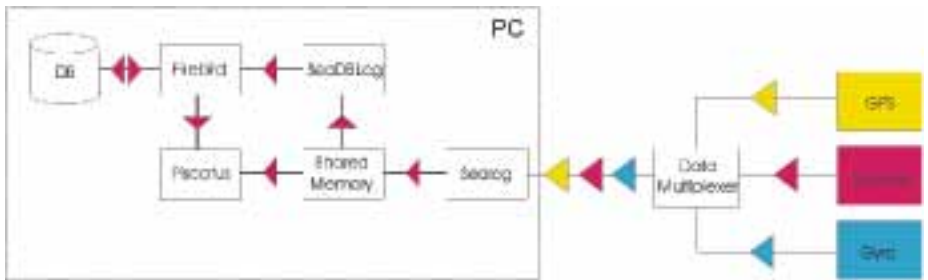


Figure 1: The relationships and data flow between Piscatus^{3D} elements

SMISeaLog is a stand-alone program separate from Piscatus^{3D}. SMISeaLog picks out the various NMEA sentences it has been configured to recognize such as depth, position, hardness and roughness, COG, SOG and net position, and writes these parameters to Shared Memory. It also flags, or discards, errors in the incoming data such as an incorrect position from the GPS, or the sounder coming off the bottom and giving erroneous depth values. Piscatus^{3D} and SeaDBLog then both read the values from Shared Memory. If C-Plot Pro or SeaPlot Pro are also installed on the same computer, they can access Shared Memory as well and use the parameters and values stored there. SMISeaLog also has a tide calculation engine and calculates the tide based on GPS position and GPS date/time. SMISeaLog then places this tide value in Shared Memory to be used by Piscatus^{3D} and SeaDBLog. Tide information comes from any of three tide engines, being the Piscatus^{3D}, TotalTide or Proudman tide engines.

SeaDBLog writes depth, hardness and roughness information from Shared Memory to the Piscatus^{3D} database file (C:\Piscatus3D\Data\BATHYMETRY.FDB). The SeaDBLog program runs as a background Windows service called the 'SeaLog Database'. SeaDBLog also creates trip logs, which are exported by the Map Manager program and can be imported into the Fleet Manager program. Fleet Manager is sold separately and is used by commercial fisheries to maintain a central database back at head office.

Piscatus^{3D} also reads **Shared Memory** to dynamically update the terrain model and boat position in real time. Only when a new position is rendered does Piscatus^{3D} fetch points from the database.

Piscatus^{3D} Inshore Pro and Piscatus^{3D} DeepSea Pro both install from the same set of disks. The Permit Code you are given by Seabed Mapping when licensing the software determines what mode Piscatus^{3D} will run in and whether any additional modules are activated.

Navigator is another program that is opened from within Piscatus^{3D} itself. This program gives the user an overview of the world with coastlines, boat tracklines and high resolution global bathymetry maps. Piscatus^{3D} Navigator is standard with all Piscatus^{3D} Inshore Pro and Piscatus^{3D} DeepSea Pro installations and does not require any extra installation steps.

SmartNet™ is an add-on module that can be purchased in addition to the standard Piscatus^{3D} system. It is a net positioning system that determines net location by matching depths received from the net sounder with seafloor depths stored in the Piscatus^{3D} database. SmartNet™ can be added on to any Piscatus^{3D} DeepSea Pro installation. If you are doing a SmartNet™ installation on a boat, please contact Seabed Mapping for further details.

1.4 Built in data

Piscatus^{3D} comes with a built in background dataset called Predicted Bathymetry that covers the planet. This data is a one nautical mile grid cell dataset based on satellite altimetry. The dataset is kept separate from the boat's actual soundings and once the boat has collected its own data the background data will be ignored where the owner's data is present.

Another type of background data is Piscatus^{3D} relief data. These are high detail data files available in some areas containing topographical and/or bathymetry data for localized areas. This data is typically used to draw land terrain for inshore and lake fishing. The data is installed separately from the Piscatus^{3D} background Predicted Bathymetry and is only available in areas where either topographical or bathymetry data is available in the public domain. Typically the precision of this data is around 90m and therefore may produce some accuracy errors around the shorelines. Note however that boat data collected will always override land data points present in same location.

In some special cases supplementary data can be supplied as text XYZ data and imported into the user database via the Map Manager program. This data may come from a number of different sources including other Piscatus^{3D} users, hydrographical offices and government agencies. Instructions for importing this type of data can be found in the user guidebook.

1.5 Computer specifications

The minimum system requirements for running Piscatus^{3D} successfully are outlined below. However, for performance reasons, we strongly suggest you obtain a system that encompasses the recommended requirements.

Recommended system requirements:

- Intel® Pentium® Dual Core Processor 1.8 GHz
- 1024 MB of DDR RAM
- GeForce 6 series 256MB
- nVidia Video Card essential
- 80GB 7200 RPM Serial ATA Hard Drive
- Screen Resolution 1280 x 1024

2.0 INSTALLATION INFORMATION

The installation process of Piscatus^{3D} can be undertaken in many different ways. This section will explain some of the options and help to remove any uncertainties.

2.1 Installation types

1. User demo
2. Dealer demo
3. Trial installation
4. Full installation

	ITEM	DESCRIPTION
1	User demo installation	<ul style="list-style-type: none">• The user demo version on the brochure disk will install without a dongle.• It will display pre-loaded bathymetric data.• It won't record input from a sounder or GPS.• It can be installed on multiple computers.• It will expire 60 days after installation.• It can't be loaded back onto the same computer.
2	Dealer demo installation	<ul style="list-style-type: none">• The dealer demo version will install from any Piscatus^{3D} installation CD.• It requires the special demo dongle to run.• This will allow dealers and distributors to demonstrate Piscatus^{3D} on an ongoing basis, either in a showroom, office or from a laptop.• It has the same functionality as the user demo except that it will not expire after 60 days if installed correctly and enabled with the special demo dongle.• When you load the disk, go to the Advanced Options tab and select the Display Demo Install button in the Install Setup menu.• When the dealer install option has been selected the button to install Piscatus^{3D} should display the text 'Install Piscatus^{3D} Demo Version'.• The Dealer Demo version actually installs a database containing more detailed bathymetric data for display purposes.

3	Trial installation	<ul style="list-style-type: none"> • A 60-day trial license for the full version of Piscatus^{3D} can be loaded during the installation process. • When you load the disk, simply select the Install Piscatus^{3D} Version 5 Trial button on the default menu. • The trial version does not require a dongle although a permit code is required for the system to function. • Please note that once installed, these 60-day trial licenses cannot be un-installed or re-installed. • The license will remain on the system for 60 days. • After 60 days the installation can continue to be used if a dongle is inserted into the computer, although you will need to contact us in sufficient time for us to physically get a dongle to you. • The trial version has full Piscatus^{3D} version 5 functionality. i.e. it can receive and save GPS, sounder, etc data.
4	Full installation	<ul style="list-style-type: none"> • The full version can be installed direct from the disk on the Piscatus^{3D} installation pack. • The installation requires a dongle to be present and also a permit code supplied by us. • A trial version can be 'upgraded' to a full version within the 60 day trial period using a dongle and permit code supplied by us.

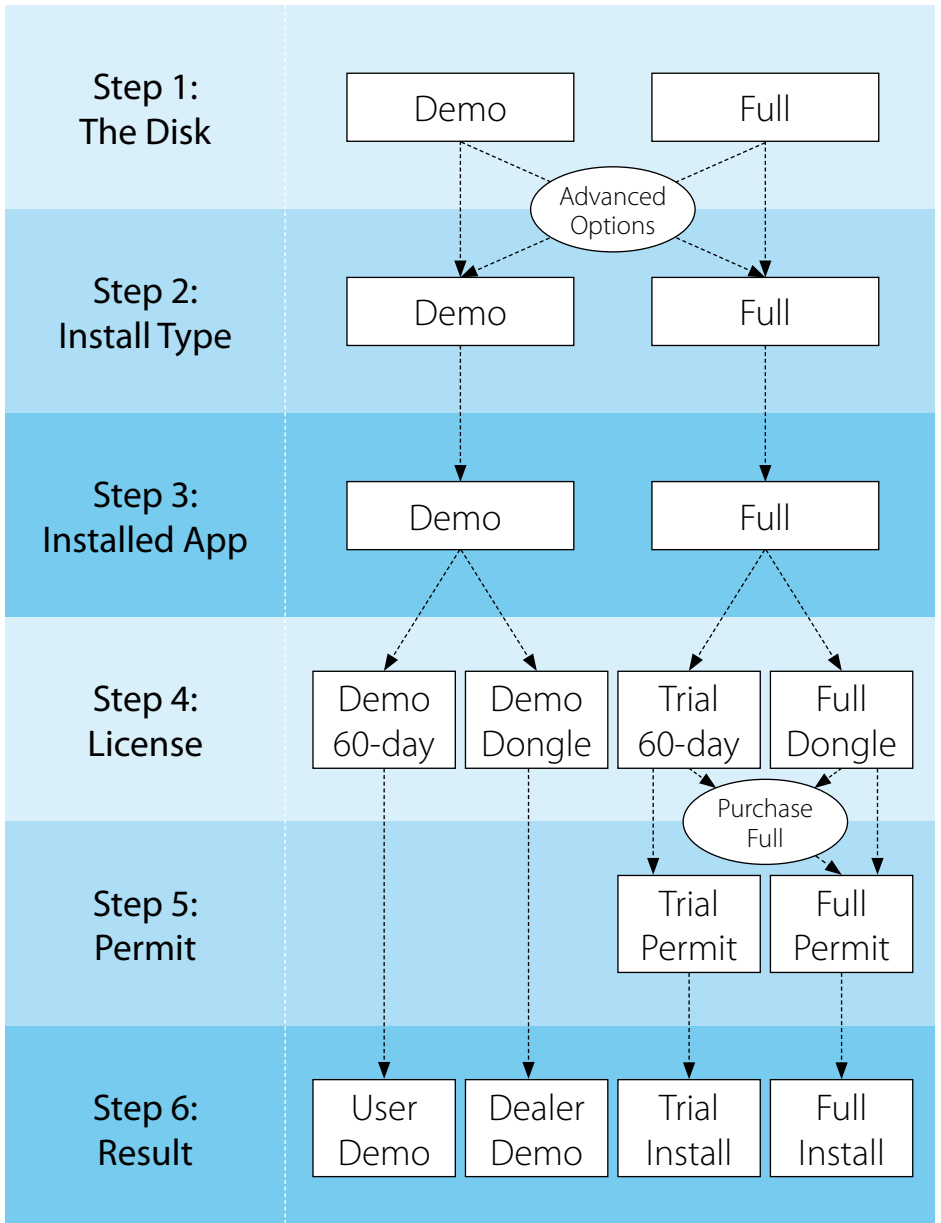
Piscatus3D | Functional differences: Demo vs. Full License

FEATURE	DEMO LICENSE	FULL LICENSE
Receives instrument inputs (GPS, Echo Sounder, Simrad ITI) via multiplexer (NMEA 0183)	✗	✓
Creation of marks, vessel tracks	✓	✓
Trial (60 days) available?	✓	✓
Physical dongle required for permanent installation?	✓	✓
Permanent Storage of instrument inputs (including navigation and other data) in program database	✗	✓
Permanent storage of marks, vessel track in program database	✗	✓

2.2 Installation media

	ITEM	DESCRIPTION
A	Piscatus ^{3D} version 5 installation CD	<ul style="list-style-type: none"> To install full options – Classic, Inshore-Pro, Deepsea-Pro To install 60 day trial version without need for dongle
B	Demo installation & promotional movie DVD	<ul style="list-style-type: none"> Contains Piscatus^{3D} demo installation & background relief data. Contains video presentations with audio in English.
C	Background relief data CD	<ul style="list-style-type: none"> 3D topography data installation CD (relevant to area of customer). Supplied separately with Item A above for you only.
D	Dongle	USB security key (Demo or Full)
E	Installation pack	Box, sleeve, Quickstart guide, user manual, installation manual

2.3 Installation model



3.0 SOFTWARE INSTALLATION

3.1 Installing Piscatus^{3D}

Note - make sure you are logged on as Administrator to do the installation.

1. Place the Piscatus^{3D} installation CD in the computer's CD drive. The setup program should start automatically, however if Autorun is disabled on the machine you will have to start it manually. To do this go to Windows Explorer and navigate to the CD drive and double click on 'SetupPiscatus5.exe'. Microsoft Windows Vista will require the setup program to be run as an administrator and will display a message to this point which you must accept to start the installation process.

2. The Piscatus^{3D} installation window will open, as shown to the right. Installation options can be set up on the window by clicking the 'Advanced Options' tab. These options should not be changed when doing a first install, as they control which components are installed, and all are required on first install. Reinstalling individual components can be helpful after install if one component is found to be faulty and must be replaced. To continue press the 'Next' button.



3. On the 'Install' tab there are two options. Select 'Install Piscatus^{3D} Version 5' to install the full working version of Piscatus^{3D}. Or select 'Install Piscatus^{3D} Version 5 Trial' to install a 60 day version which also has full working functionality.



Note: Trial installations can be converted to full installation after 60-days by purchasing a dongle and requesting a new full version permit code. But please be aware that the system will not run once the 60-days has expired and that there may be some downtime before a dongle is received.

4. Once either the full or trial install option has been selected the installation will start. This installation installs all required parts of the Piscatus^{3D} system. You will now be asked if you want to proceed with the installation on your local drive, as shown below, select 'Yes'. The default installation directory for Piscatus^{3D} is C:\Piscatus3D\



5. The first thing to be installed on your computer will be Firebird Database server 2. You may be displayed with a security warning before installation of Firebird Database Server, as shown below. If displayed select 'Run', 'Accept' or 'Allow'.



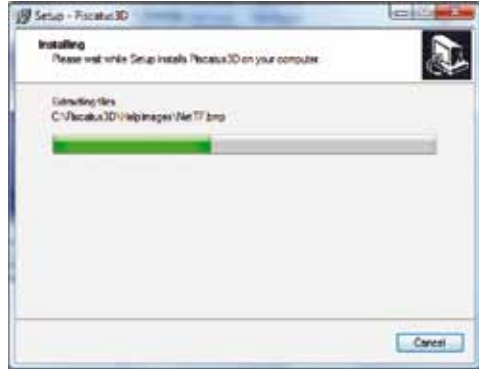
6. The HASP SRM Run Time Environment (RTE) is the next component to be installation.

- a. If you are installing the full working version the installation will ask you to insert you HASP dongle once the RTE is installed. The window to the right will be displayed. This window will automatically disappear and the installation will continue once the dongle is detected. If you do not have the dongle at this time select the 'Cancel Search' button to continue the installation.



- b. If you are installing the 60-day trial version the installation will ask if you wish to have a 60-day license. Select 'YES' to this question. Please note that this 60-day license cannot be un-installed or re-installed

7. Next the Piscatus^{3D} application will be installed. This is automatic and no settings and buttons must be touched. The process windows as shown to the right will be displayed.

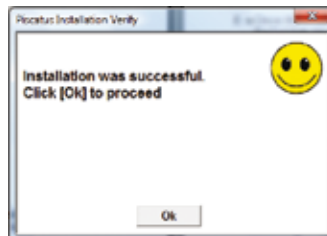


8. The underlying data sets that come with Piscatus^{3D} will now be installed. First to be installed is what we call the 'Predicted Bathymetry' dataset. This is the satellite altimetry dataset for the whole planet based on the ETOPO1 dataset, and is what Piscatus^{3D} uses for its initial maps. Once a boat starts to add real data, the bathymetry is immediately updated to use the real data.



9. Once the Predicted Bathymetry installation has been completed, an empty BATHYMETRY.FDB database file is installed. This database stores the boat's soundings and hardness/roughness data.

10. Following installation of the database, Piscatus^{3D} Navigator and high-resolution bathymetry maps are installed.



-
11. When installation has completed a verification program is run to check everything has been installed correctly and all services are running.

You will be notified when installation is complete. In order to finish the installation process and start all required components and system reboot is required. Options are displayed as shown below to reboot now or later. It is recommended you reboot now.



12. Before your Piscatus^{3D} system will operate the installation will need to be permitted and SMISealog will need to be configured to listen to the incoming NMEA data from the GPS, echo sounder and seabed discrimination device (if present). Instructions for configuring SMISealog are outlined in section 3.0.
13. If you are outside New Zealand it is possible that you will be supplied an extra 'Background relief data' CD inside the installation pack. This installs land and seabed data for your area (if available). Please install this data before using Piscatus^{3D}.

3.2 Running Piscatus^{3D} for the first time – obtaining the Permit Code

Piscatus^{3D} uses a dongle and a special code (referred to as a Permit Code) for its security and licensing. If your local supplier does not have a dongle in stock a 60-day trial can be installed and used without a dongle. This gives you a window of time to organise the delivery of a dongle, so that your Piscatus^{3D} system can be permanently used. Please give your local supplier as much notice as possible to avoid purchasing a Piscatus^{3D} system when no dongles are being held in stock.

To obtain the Permit Code to licence Piscatus^{3D} and operate the software you need to contact Seabed Mapping and provide us with the Computer ID of the machine you are installing Piscatus^{3D} on.

1. The first time you run Piscatus^{3D} after installation the 'Computer Identity' window will open, as shown below.



2. Please supply Piscatus^{3D} Limited with the 32 digit Computer Identity code either via email (support@piscatus.co.nz), or through our website dealer login page (<http://www.piscatus.co.nz/login.htm>). If you do not have internet access you can phone us on +64 3 545 7020 or fax the code to +64 3 545 7021. We strongly recommend using either email or the internet and copying and pasting the codes so as to prevent any potential errors when copying them down.

Other Information we require is the Piscatus^{3D} mode (either Inshore Pro or DeepSea Pro), vessel name, and the company name the vessel belongs to. The latter is only used when generating the Permit Code as Piscatus^{3D} installations have encryption routines that take into account the parent company to allow data sharing between vessels using the Fleet Manager and Map Manager programs.

3. Seabed Mapping will reply with a 64 digit Permit Code that should be entered in the bottom text field of the above 'Computer Identity' window. Once the Permit Code has been entered, click the 'Accept' button to continue. Piscatus^{3D} will automatically load after you have accepted the Licence Terms.
4. Piscatus^{3D} is now ready to use. Click the 'Follow Boat' option in the upper left hand corner of the screen and you will be taken to the current boat GPS position.

Note: SMISealog may need to be configured before Piscatus^{3D} can receive GPS position and other data – see section 4.0.

4.0 CONFIGURATION OF SMISEALOG

After Piscatus^{3D} has successfully installed you will need to configure it correctly so that it talks to the boat's electronic equipment. Most of the required configurations are default settings but they may need a little tweaking depending on the boat involved.

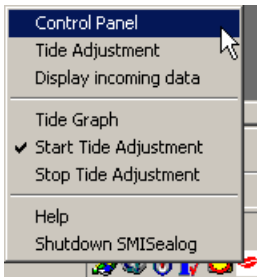
4.1 Introduction

SMISealog is the data entry point for the Piscatus^{3D} system. SMISealog listens to the data being sent into the PC's serial comm port or UDP network. This data is received in NMEA format from marine equipment, for example, GPS or echo sounder. SMISealog then extracts the required data from this and shares it to Piscatus^{3D} to be viewed.

SMISealog also uses GPS position, date and time data to calculate the current tide at boat position. This tide value is used by Piscatus^{3D} to correct all recorded depth data to chart datum.

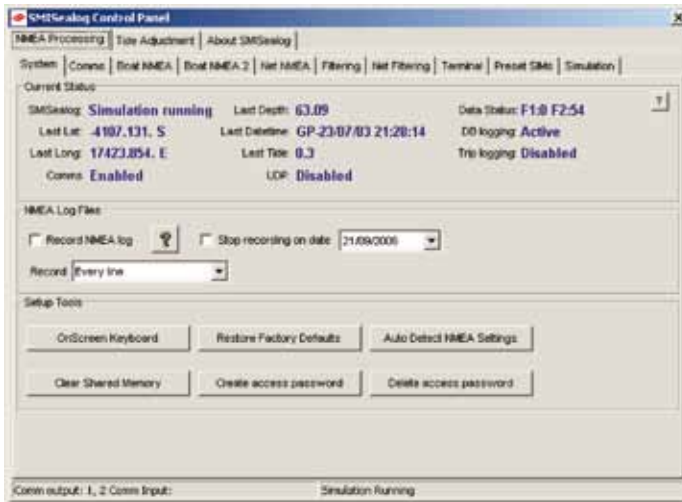
When you first install Piscatus^{3D} there are some settings in SMISealog that will need to be set. Please read the 'Quick setup' section (3.1.2) of the manual for a brief description of this setup stage, or read the remainder of the manual for a detailed step-by-step description.

4.1.1 Using SMISealog



SMISealog runs as a background task to Piscatus^{3D} and runs in the Windows system tray. To access the SMISealog menu left click on the small white and red fish icon. From this menu you can do simple tasks like starting and stopping tide adjustment, viewing the current tide graph or opening the 'SMISealog Control Panel' window. A picture of the SMISealog menu is shown on the left.

The top option called 'Control Panel' opens the 'SMISealog Control Panel' window where SMISealog settings are set and modified, as shown below:



The SMISealog control panel is designed using tab controls. There are two main tabs along the top for NMEA processing and tide adjustment. Beneath each of these main tabs are sub tabs that group different options available to the user. The status bar along the bottom shows which comm ports are currently being used.

4.1.2 SMISealog quick setup

1. Turn on all electrical equipment that has been wired to send data to Piscatus^{3D}. This includes equipment like GPS, echo sounder and data multiplexer. Check data cables are correctly plugged into PC serial rs232 comm ports.
2. Check for data in terminal. Open the 'SMISealog Control Panel' window by left clicking on the SMISealog icon and selecting the 'Control Panel' option. In the window that opens, click the 'NMEA Processing' tab and then the 'Terminal' tab. Select different comm ports from the 'Display Input' list. Data will appear as white lines of text against the black background, each line will normally start with the \$ character. Note down a list of which comm ports display data.

Example data string:

```
$GPGGA,212812,4107.138,S,17423.858,E,1,7,2.1,-1,M,19,M,,
```

-
3. In the 'SMISealog Control Panel' window, click on the 'NMEA Processing' tab and then the 'Comms' tab. In the 'Read input from (Max 5 ports) list, tick each of the comm. ports for the appropriate input comm port as noted in Step 2. Finally tick the 'Enable Comms' option to start data processing.
 4. The quickest way to set up your NMEA processing options is to open the 'SMISealog Control Panel' window, click on the "NMEA Processing' tab and then the 'System' tab, and in here click the 'Auto Detect NMEA Settings' button. This process will monitor all incoming data for thirty seconds then automatically select the best options. In the 'Net NMEA' tab you should select the type of net monitoring equipment (if any) used.
 5. Now check the incoming data. In the 'SMISealog Control Panel' window, click the 'NMEA Processing' tab and then the 'Comms' tab, and then click the 'Display incoming data' button. This will open the 'Incoming data' window. Check the different fields in this window, there needs to be a minimum of the following items in order for Piscatus^{3D} to operate:
 - UTC Date
 - UTC Time
 - Latitude
 - Longitude
 - Depth
 6. If some fields are missing like Heading or SOG, go to the 'Boat NMEA' tab and select the appropriate NMEA sentence type. Heading may need to be changed from GPHDT to RMC. Heading, COG and SOG data is not essential but does make the software better to use.
 7. Once you have selected a tide engine, if a tide station is available in your area the above data will be enough to calculate its current height. Allow up to 30 seconds for the tide engine to find a station after a lat long position is detected by SMISealog. Additional tide station options can be chosen on the 'Tide Adjustment' tab in the 'SMISealog Control Panel' window.
 8. If you have net sensors attached to your trawl this data should appear in the 'Incoming data' window in the right hand column called 'Data From Net'. Most trawl sensor systems need to be in a simulation mode in order to output data when the net is not in the water.

Note - if you are missing important data you may have to customize your NMEA or filtering settings. Please check 'Selecting NMEA settings' and 'Filtering Data' sections of this manual for further assistance.

9. Start Piscatus^{3D}. If all required data is shown in the 'Incoming data' window, start Piscatus^{3D}. Piscatus^{3D} should detect the data and load a 3D seabed for around the boats current position, when this happens the 'Follow boat' option in the bottom left of Piscatus^{3D} will be ticked.

4.1.3 Viewing SMISealog Status

The 'System' first tab under the 'NMEA Processing' tab of the 'SMISealog Control Panel' window gives you a quick summary of SMISealog's current status.

The top section called 'Current Status' gives you a live update of the most important data values being used by Piscatus^{3D}. All these data values and the data status readings are important for Piscatus^{3D} to work correctly. Also displayed here is the status of database logging and trip logging.

The bottom section called 'Setup Tools' gives you an option to open a virtual keyboard for users of Piscatus^{3D} with touch screen displays. This virtual keyboard can be used anywhere in Windows to enter text. A user can also restore factory settings and perform an automatic NMEA setup.

4.2 Comm ports and NMEA

4.2.1 Viewing incoming data

To view the incoming data, open the 'SMISealog Control Panel' window, click the "NMEA Processing' tab and then 'Terminal' tab. The control on the left called 'Display Input' is where you select the comm port you wish to view data coming in from. The control to the right is a where the associated incoming data is displayed - this control is black and will display lines of incoming NMEA data with white text. Sometimes these lines of data will appear very quickly and must be paused in order to be read. To pause the incoming data click the 'Pause' button at the bottom of the window.

For example, to view data coming in from comm port 3:

Left click on the 'Comm3' option in the 'Display Input' list. When this option has been checked data from comm port 3 will be displayed on the right hand black data display area.

4.2.2 Setting up comm ports

To set SMISealog to listen for incoming data, open the 'SMISealog Control Panel' window and click the 'NMEA Processing' tab and then the Comms tab. Comm ports can set up to listen for, or to send data. From the 'Comms' tab the baud rate (speed) of data being sent or received can be set and whether or not incoming data should be checksum validated. There are also options to completely stop/start data comms and database logging.

Note - data cannot be read and sent from the same comm port. In order to read and send data you must have a minimum of two available comm ports.

Setting the correct comm port and NMEA settings can be complicated and should only be done by a marine electronics technician.

4.2.3 Listening to incoming data

To listen to incoming data from a specific comm port, open the 'SMISealog Control Panel' window. Click the 'NMEA Processing' tab and then the 'Comms' tab and click on the required comm ports name from the list on the left entitled 'read input from (Max 5 ports)'. A tick will appear to the left of the comm port's name to indicate that SMISealog is listening to this comm port for data. Up to five comm ports can be selected to receive data.

4.2.4 Sending data

Data can be sent from SMISealog out a comm port. For example you can send data to a CNBX that is using the SmartNet system; send data to another PC or device; or send data to another comm port for another application.

To send data from a specific comm port, open the 'SMISealog Control Panel' window. Click the 'NMEA Processing' tab and then the 'Comms' tab and click on the required comm ports name from the list on the right entitled 'Send output to (Max 2 ports)'. A tick will appear to the left of the comm port's name to indicate that SMISealog is sending data out this comm port. Up to two comm ports can be selected to send data.

4.2.5 Using the automatic NMEA setup feature

The automatic NMEA setup feature is designed to listen to the data being received by SMISealog and automatically set all NMEA string settings. It does this by listening to the receiving data for a set time and using the highest count values of received NMEA strings to select the best settings. To access this automatic NMEA setup feature, open the 'SMISealog Control Panel' window, click the 'NMEA Processing' tab and then the 'System' tab, and then click the 'Auto detect NMEA Settings' button. Before starting the automatic NMEA setup feature make sure all marine electronic devices sending data to Piscatus^{3D} are switched ON and sending data. Please refer to the 'Viewing incoming data' section of this manual for information on viewing incoming data.

4.2.6 Selecting NMEA settings

All data sent to Piscatus^{3D} must be in NMEA format. This format sends lines of data with each line containing an identifier and data delimited by commas. There are many different NMEA strings, some of which contain the same data. Piscatus^{3D} must be set up to process the NMEA data your equipment is sending. Piscatus^{3D} knows how to process many different NMEA strings, but needs to know which ones to expect. This means setting the identifier Piscatus^{3D} will listen for depending on the data type required. An identifier is made up of two parts - a talker and a data type.

For example, depth data has a talker of SD and data type of DBS, therefore the identifier is SDDBS.

Setting the correct comm port and NMEA settings can be complicated and should only be done by a marine electronics technician.

Roughness and hardness NMEA setup is much easier. Simply choose between JRC or Furuno echo sounders, or SeaScan or RoxAnn seafloor discrimination systems. There are offset values that can be entered for this data. We have found that different echo sounders and SeaScan units give out different values for the same type of seafloor. This offset value allows you to correct these differences between units when data sharing between vessels.

The 'Net NMEA' tab has options for setting up Piscatus^{3D} to listen to your net positioning equipment. With these data, Piscatus^{3D} can put your net in a real position relative to the terrain, for more effective fishing. There are options to select what type of net positioning system you have. Selecting one of these will set the correct NMEA setting below. Settings may need to be adjusted for each installation.

The default settings in Piscatus^{3D} should be correct to get GPS position and echo sounder depth from most modern marine electronic equipment. The best way to find what NMEA strings your equipment outputs in to use the terminal tab in SMISealog. Use this to view a comm ports data and press the pause button to stop the data display update so you can read to the individual NMEA strings being received.

If you are having problems setting up SMISealog to listen to your NMEA strings, please try the 'Automatic NMEA setup' feature. For information on this please refer to section 3.2.5.

4.2.7 NMEA examples

Position, heading and speed

GPS

\$GPGGA	GPS position and time
\$GPRMC	GPS position and time
\$GPVTG	Speed and course over ground
\$GPZDA	Time and date

Gyro

\$GPHDT	Vessel heading
---------	----------------

Depth

Sounder

\$SDDBT	Depth below transducer
\$SDDBS	Depth below sounder

There is an option on the 'BOAT NMEA' tab to enable support for an old JRC NMEA format with a leading 'U' character.

Hardness/Roughness data

JRC JFC130

\$PJRCS	Hardness data
---------	---------------

SeaScan

\$PSAP	Depth, Hardness and Roughness data
--------	------------------------------------

RoxAnn

N/A	Depth, Hardness and Roughness data
-----	------------------------------------

Furuno

\$PFEC Depth, Hardness and Roughness data

Net information

When using any of the following please ensure that the correct net monitor is selected on the 'Piscatus^{3D} Setup' window.

Simrad ITI

\$IIGLL Net position
\$IIDBS Depth below sounder
\$IIHFB Trawl height footrope and bottom
\$IITDS Trawl spread

Furuno CN22

\$IIDBS Depth below sounder
\$IIMTW Temperature

Scanmar

\$SMDBS Depth below sounder
\$SMHFB Trawl height footrope and bottom
\$SMTDS Trawl spread

Netview3D

\$IIN3D Net position, depth, range, height and temperature

Pacha Geonet

\$IISAL Net sensors range, bearing and depth
\$IISAN Net sensors height, temperature and spread

4.2.8 Primary and Secondary depth data and auto-switch

Some vessels have more than one echo sounder. One could be a backup or preferred at increased depths. The 'Sounder Data' section of the 'Boat NMEA' tab allows SMISealog to be setup to receive data from two different NMEA strings. SMISealog will switch from primary to secondary (or vice versa) automatically when no depth data has been received for some time or when the auto-switch depth is crossed.

4.2.9 Filtering data

To access the filter settings, open the 'SMISealog Control Panel' window, click the 'NMEA Processing' tab and then the 'Filtering' tab. The Piscatus^{3D} system does data cleaning and these are the filtering settings here in SMISealog. These settings allow incoming data points to be compared with recent data points and are designed to filter out erroneous data points, for example, double echo used as bottom depth by your echo sounder.

Filter setting	Description
Vessel position	Sometimes GPS position can jump and cause Piscatus ^{3D} to load another 3D seabed map. By setting this option GPS positions further than 1000 metres from your last known good position will be ignored. This is automatically corrected if more than six GPS positions are found to be beyond 1000 metres.
Min/max acceptable depth	This is a simple check on the data coming in from the echo sounder. It basically stops huge errors from the echo sounder and also keeps data within the limits of the Piscatus ^{3D} 3D system.
Echo sounder Depths	This filter compares incoming data with recent data points and is designed to filter out erroneous data points, such as a double echo. It generates an average for the last x points and allows for an error of y, if the new data is outside the range of y for z readings, the average is reset using new data. The default settings for this are X = 5, Y = 50 and Z = 10.
Depth offset	This setting allows you to set how far under the water line your transducer is. When a depth is received from your echo sounder this distance is added.
Net height	This filter works in the same way as the above filter but on the net height from seabed data. X = 3, Y = 10 and Z = 5.
Net depth	This filter works in the same way as the above filter but on the net depth below sea level. X = 3, Y = 20 and Z = 5.
Cleaning level	When each point is added to the database it is compared against points around it. By default this is on the normal setting. If you struggle with bad data from your echo sounder try the high setting. Database cleaning can also be stopped by setting the cleaning level to none.

4.2.10 Enabling 'Setup Mode' to ignore GPS position problems

SMISealog is normally configured with the vessel at the wharf/Dock. As the vessel is not moving SMISealog will flag the data as having a problem, therefore causing Piscatus^{3D} to ignore all data. There is a setup mode option at the bottom on the 'System' tab in the SMISealog control panel. Place a tick in this option to make SMISealog ignore GPS position problems so data can be checked in Piscatus^{3D}. This option is not saved and will be un-ticked when SMISealog is next loaded.

4.2.11 Receiving ARPA target data

The settings for receiving ARPA target data are on the 'boat NMEA 2' tab in the SMISealog. SMISealog is only able to receive data from the radar NMEA string \$RATTM. If this string is being received that ARPA targets within that string will be listed on this tab. There are no other settings which need to be adjusted.

4.3 Using tide adjustment

4.3.1 How tide adjustments are calculated

Piscatus^{3D} is a utility built into SMISealog that uses data from tide stations around the world to calculate the tide. Corrections can then be applied to depth data stored in the Piscatus^{3D} database. The tide station used to calculate the current tide is the closest station within range of the boat's position. This range is 40,000m (40km) by default, but it can be changed. Once the tide station is found, the GPS date/time (or, if unavailable, your computer's date/time) is used to calculate the tide.

4.3.2 Viewing current tide adjustment

To view the current tide at the boat's position, open the 'SMISealog Control Panel' window, click the 'Tide Adjustment' tab and then the 'Current Tide' tab. This tab displays the data used to generate the tide value, and when it was last updated.

4.3.3 Selecting a tide engine (check)

SMISealog is able to calculate tide with three different engines. The first is the Piscatus^{3D} Tide Engine and is available worldwide with every installation of Piscatus^{3D}.

There are another two tide engines available which are able to produce better tide calculations in European countries; these are TotalTide and Proudman. Both these tide engines must be purchased and installed separately before they can be used in SMISealog. Please contact your local Piscatus^{3D} dealer for details on obtaining a copy of these tide engines.

The TotalTide tide engine requires no extra settings to be selected before it begins to provide tide values to Piscatus^{3D}. But the Proudman tide engine requires you to select the data and license files, which are in the Proudman installation directory.

4.3.4 Setting a default tide station to always be used

This feature is only available when using the Piscatus^{3D} tide engine. By default SMISealog automatically uses the closest tide station in order to calculate the current tide value. The user can override this setting by manually selecting a default tide station.

1. Open the 'SMISealog Control Panel' window and click on the 'Tide Adjustment' tab and then the 'Current Tide' tab.
2. In the 'Tide Options' section at the bottom of the window, click the 'Always use' option, then click the 'Set' button.
3. A message will pop up asking you to select the tide station to use, dismiss this message by clicking the 'OK' button. You will automatically be taken to the 'Lookup' tab of Piscatus^{3D} Tide.
4. Click the 'Set as default station' button.
5. You will be returned to the 'Current Tide' tab and you will notice that the tide station you just selected is now displayed in the 'Always use' box.

4.3.5 Viewing a list of available tide stations in your area

This feature is only available when using the Piscatus^{3D} tide engine. To view a list of available tide stations in your area, open the 'SMISealog Control Panel' window and click on the 'Tide Adjustment' tab and then the 'Lookup' tab. Enter a latitude and longitude for your area and click the 'Lookup' button. The tide engine will search for tide stations around the

latitude/longitude position entered up to the maximum range set (the default is 40,000 metres). The tide stations found to be within range of the latitude/longitude entered will be displayed. These tide stations can then be selected and set as a default tide station or their tide values can be viewed graphically.

4.3.6 Viewing the tide station graph

This feature is only available when using the Piscatus^{3D} tide engine. To view a tide graph open the 'SMISealog Control Panel' window and click on the 'Tide Adjustment' tab and then the 'Graph' tab. This tab will automatically show the current tide station being used but different tide stations in the area can be viewed by selecting them from the drop down box. Tide stations for other areas can also be displayed by searching for them using the lookup feature on the 'Lookup' tab described above.

4.4 Simulations

4.4.1 Recording simulation files

SMISealog can be set up to record simulation files in the 'System' tab of the 'NMEA processing' tab. These simulation files record the raw NMEA data being received by SMISealog and using the simulator in SMISealog can be played back and sent into SMISealog again.

1. To start recording a simulation file open the 'SMISealog Control Panel' window, and click on the 'NMEA Processing' tab and then the 'System' tab.
2. In the 'NMEA Log Files' section, tick the 'Record NMEA log' option. Optionally specify a date when you wish the recording to cease at.
3. Underneath this option there is a setting that allows you to control the amount of NMEA data recorded. We recommend 'Every line' be used. However, for users with little hard drive space the recording of simulation files over a week or more can create some rather large files so this frequency can be changed to conserve hard drive space.
4. Recorded simulation files are stored on the hard drive in the C:\Piscatus3D\Data\NMEALogs\ folder Each simulation file is named based on its date created with extension '.txt'. For example, a file created on August 31 2005 would be 31082005.txt

Note - for information on playing back a recorded simulation file please refer to the section 4.4.2.

4.4.2 Playing recorded simulation files

In order to play a recorded simulation file, NMEA settings must be correctly set. This section of the manual only covers use of the simulation and not SMISealog setup.

1. To start a simulation open the 'SMISealog Control Panel' window and click on the 'NMEA Processing' tab and then the 'Simulation' tab.
2. Click the '...' button. This will open an 'Open' file dialog box, use this to navigate to, and select, a NMEA simulation file.
3. Set the 'Play Options'. The play speed of the simulation can be adjusted by changing the Line delay (m/s). We recommend 100 m/s. Increasing the line delay will slow the simulation.
4. Click the 'Start SIM' button to start the simulation.
5. Check the simulation progress. The simulation progress can be checked in two places. The first is the progress bar below the 'Start SIM' button; this should be slowly filling as the simulation file is played. Below the progress bar there is also a line count that should be increasing.
6. It is important to check the 'Terminal' tab to make sure that simulation data is entering SMISealog. To do this click on the 'Terminal' tab and click the 'Display SIM data' button. White lines of text should be appearing against the black background.
7. Check processed data. Now check that all data is being processed correctly. To do this select the 'Comms' tab and click the 'Display Incoming data'. The 'Incoming Data' window will now be displayed showing you which data is being received and processed.
8. Start Piscatus^{3D} if all the above steps have worked correctly. You will be able to watch the simulation play.

4.4.3 Simulation options

There are many specialized options, which can be fine tuned in the simulator. Below is a table of these options which a description on how to use them.

Option	Description
Line delay	This option controls the speed of the simulation. Simulation files are made up of NMEA lines of data, increasing the delay between sending each line of data slows the simulation. Default = 100 m/s
File Repeat	By default this is set to play once. This means that the simulation will play from start to finish only once and then stop. There are two further options for playing twice and forever.
Start or continue options	<p>These options allow the flow of the simulation file to be changed. There are three options.</p> <ul style="list-style-type: none">• From start• From line• Continue <p>From start - starts the simulation from the start every time the 'Start SIM' button is clicked.</p> <p>From Line - allows the user to set the start point in the simulation file based on its line number. The simulation will start from this point each time the 'Start SIM' button is clicked.</p> <p>Continue - allows the user to stop the simulation and continue from where it stopped. The simulation will start from where it was stopped when the 'Start SIM' button is clicked.</p>
Simulation output options	These options allow the user to control the processing and output of data. There are three options that are self-descriptive. They are used for simulations where data is being sent to another computer, device or comm port. Default = 'Process and don't send NMEA to output (comm port)'
Simulation comm output options	These options allow the user to control the flow of data being sent out comm ports. These are used for simulations where data is being sent to another computer, device or comm port. Default = Out GP and SD to same port.

4.4.4 Playing preset simulations

SMISealog is installed with three built in simulations. These are useful for Piscatus^{3D} dealers for show room presentations and other situations where the system must be viewed in operation but no real data is available.

Preset simulations are available through the 'SMISealog Control Panel' window under the 'NMEA Processing' and 'Preset SIMs' tab. Simulations are started by selecting one of the three simulation buttons and stopped by pressing the 'Stop SIM' button. As when playing simulation files the speed of the simulation can be changed by reducing or increasing the line delay.

4.5 Fault Finding

4.5.1 Restoring factory defaults

If SMISealog settings have been modified and SMISealog will not work correctly, restoring factory settings may help. This will restore comm port, NMEA, filtering and tide settings. Once factory defaults have been restored all settings would have to be adjusted to the users setup again.

1. To restore factory defaults, open the 'SMISealog Control Panel' window, click on the 'NMEA Processing' tab and then the 'System' tab.
2. In here, click the 'Restore Factory Defaults' button.

4.5.2 Finding problems

If Piscatus^{3D} does not seem to be working correctly please check all of the following. These checks are written at a marine technician level and do not give every detail on fixing the problem.

Check services

In the bottom left of Piscatus^{3D} there are six lights. All six lights should be green for Piscatus^{3D} to be working correctly. If one or more light is not green place or mouse over the light and you will get a short message of the problem. SeaDBLog can be restarted in Piscatus^{3D} through the Help | Support | System Information window. In the 'System Information' window that opens, click the 'Database' tab and in here you will see buttons called 'Stop SeaDBLog Service' and 'Start SeaDBLog Service'. SMISealog has to be manually restarted via the Windows Start Menu. Firebird must be started through Windows Services in the Administrative Tools section of Control Panel.

Check data being received and processed

If the bottom right light in Piscatus^{3D} is flashing or solid red check SMISealog is receiving and processing the data correctly through the 'Terminal' or 'Comms' tab of the 'SMISealog Control Panel' window. When viewing incoming data check for position and depth data and data lags being issued.

Check Shared Memory in Piscatus^{3D}

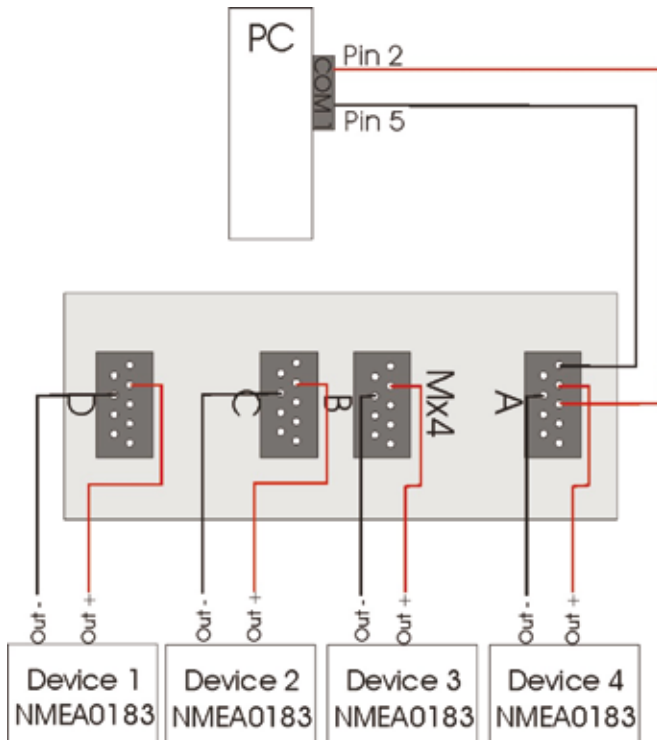
If data is being correctly received and processed in SMISealog check that Piscatus^{3D} is receiving this data. To do this, go to the Help menu and select Support | System Information. Click on the 'Shared Memory' tab and click the 'Auto update' option so it is checked. The values being sent to Piscatus^{3D} from SMISealog will be displayed. Check these values against the incoming data in SMISealog to make sure they are the same.

5.0 USING MULTIPLEXERS

Multiplexers are used to merge incoming data from multiple sources into one data stream. We recommend the MX4 and DM24 data multiplexers available from Pacific Micro Systems (<http://www.pacmicro.com/products.html>)

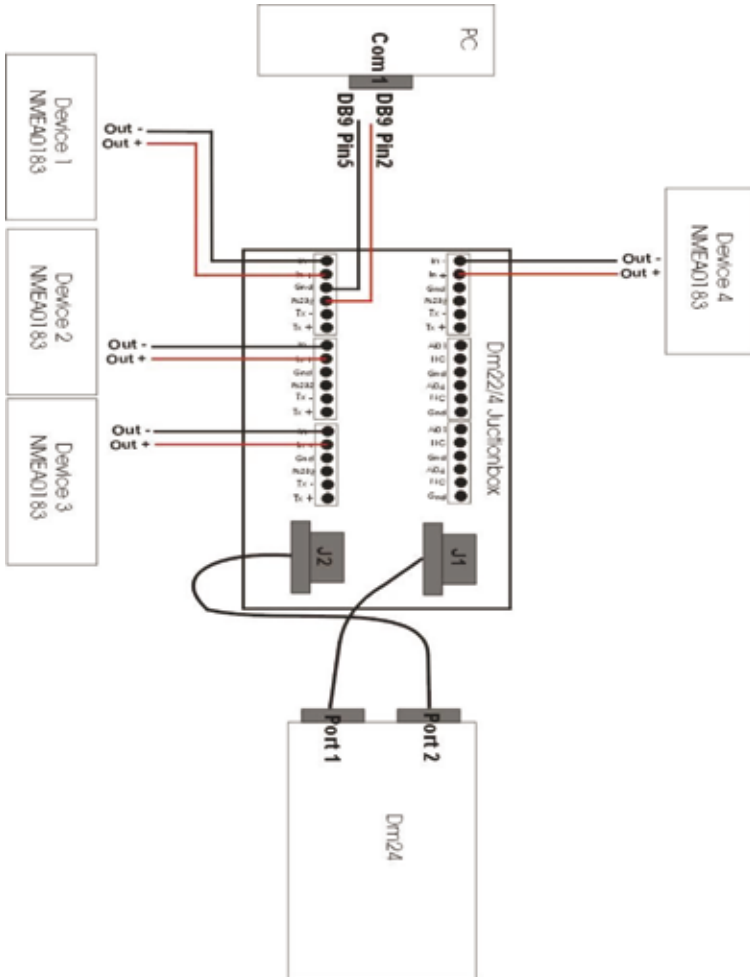
5.1 MX4

The MX4 is a simple multiplexer designed to be used when up to four data sources are to be merged, each source is in NMEA0183 format and up to four NMEA0183 outputs are required. This unit is wired up as follows with each data source and destination being wired into the top of the unit. Each source is wired to pins 2(+) and 7(-). Each destination is wired to pins 1(ground) and 3(+).



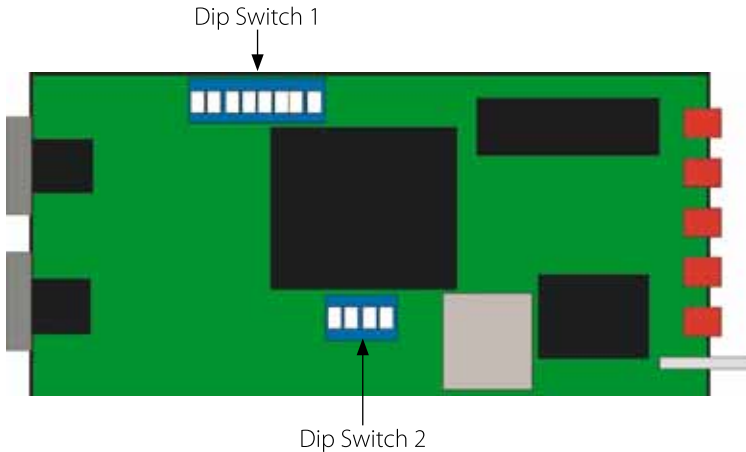
5.2 DM24

The DM24 is a more complex multiplexer designed to be used when up to four data sources are to be merged, each source is in any format and up to four outputs in any format. The unit is wired up as follows, with each device and the DM24 being plugged into the DM22/4 Junction Box. The incoming data comes into the junction box, out to the DM24 where it is converted and merged, back to the junction box and out an I/O port (standard setup = I/O 1).



5.3 How to convert Furuno CIF to NMEA0183 with a DM24

The conversion of formats is done in the DM24 using two dip switches. In the following text switch states are described as 0 or 1, where 0 represents off and 1 on.



The first thing to do is to plug the devices into the DM22/4 Junction Box. The important thing here is to plug the Furuno CIF signal into I/O 2, which is the same position as Device 2 in the diagram at the start of this section.

Now you must set the dip switches in order to convert the signal format. First take the top of the DM24 unit. There are four switches on dip switch 2, set them all to 1. There are eight switches on dip switch 1 from 1 to 8 set each switch as follows; 00100000. Turn the DM24 off and on to save the new settings.

To test the DM24 conversion turn on only the attached Furuno CIF device and watch the SMISealog 'Terminal' window to ensure the correct format data is being received.



Improve your fishing experience
and results with Piscatus^{3D}

CONTACT INFORMATION

Piscatus Limited

Port Nelson

New Zealand

P +64 (0)3 545 7020

F +64 (0)3 545 7021

E support@piscatus.co.nz

W www.piscatus.co.nz

